

ANT-DISH-24

Dual polarized MIMO parabolic dish antenna



ICCN's ANT-DISH-24 outdoor high performance antenna is a durable broadband dual polarized parabolic dish system. It is designed as a high strength antenna that can withstand winds up to 125 mph and ensures long-range wireless operation. The ANT series are dual polarity antenna systems that feature simple to mount hardware, easy to use components, and all weather-resistant parts. Featuring two N-Female ports, one for vertically polarized and one for horizontally polarized signals, the ANT series is perfect for high speed line of sight MIMO performance of IEEE802.11ac or IEEE802.11n technology.

Product specifications:

Frequency	4750 – 5850MHz
Gain	24dBi
Polarization	Dual Polarized (Vertical and Horizontal)
Horizontal/Vertical Beam-width	4.8° / 4.9°
F/B ratio	>35dB
Cross-pol Isolation	>30dB
Max Input Power	100 watts
Impedance	50 ohm
Connector Interface	Two (2) N-type Female
Weight	10lbs
Mounting Mast Size	1.6 – 3 in
Dish Diameter	17.8 in
Wind loading at 125 MPH	177lbs

ANT-DISH-24

Dual polarized MIMO parabolic dish antenna



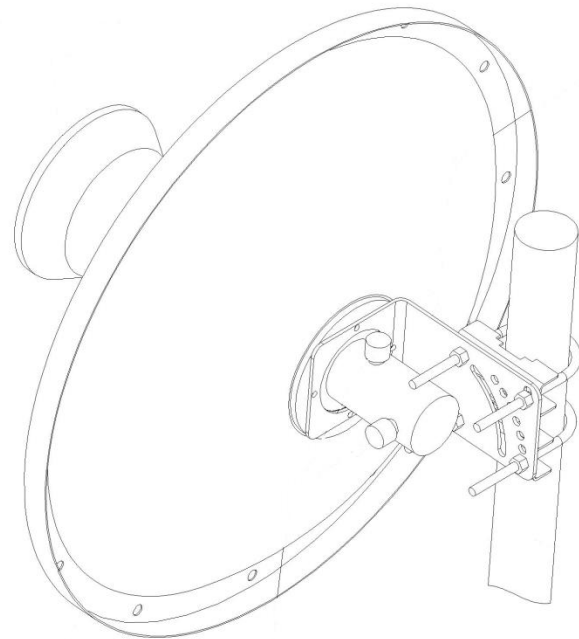
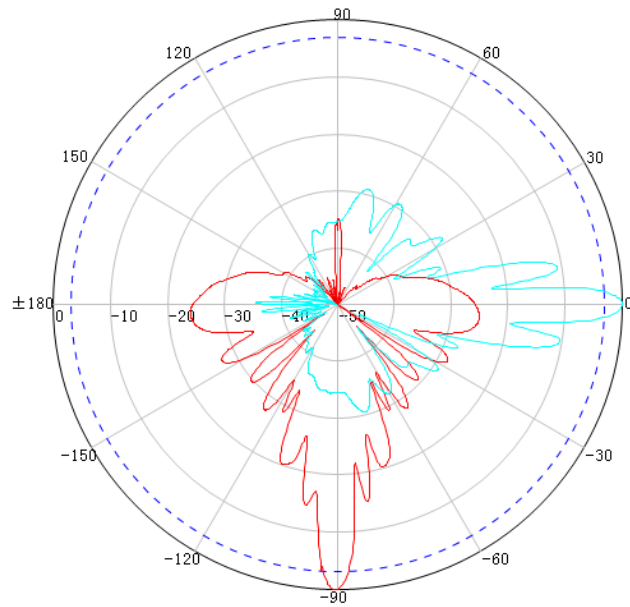
Dual Polarization allows for flexible antenna configuration for horizontal and vertical

Flexible power support for long-range connectivity

Mounting kit enables swivel and tilt for easy use

High strength construction with gray finish

Two (2) N-Female connectors



ANT-DISH-24
High gain long range directional MIMO parabolic dish antennas with up to 24 dbi gain and 2 N-female connectors

Contact:
Phone: 844.242.9246
Email: sales@intcomcorp.com
Web: www.iccnetworking.com